

You Saw WHAT At Your Inspection?

Contractor says 'Everyone else lets me do that ... why won't you?'

Photos of things inspectors find during inspections ...

Please send photos of items/issues you find/see and would like to share with others.
(I will credit you with your submission or keep your submission anonymous, as you prefer.)

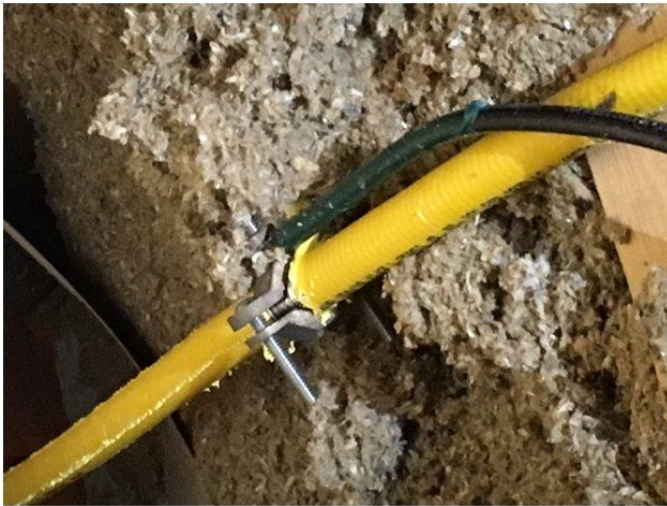


Photo 01

Issue: CSST bonded by removing the outer covering and placing the bonding clamp on the CSST tubing itself

What is the code violation section(s):



Photo 02

Issue: Window anchors/fasteners missing, leaving open holes where the anchors/fasteners should be

What is the code violation section(s):



Photo 03

Issue: Working space in front of electrical panel is blocked

What is the code violation section(s):

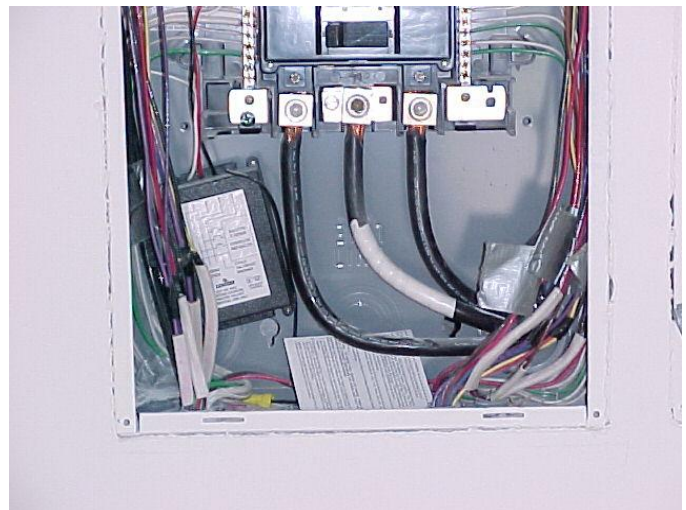


Photo 04

Issue: Surge suppressor installed inside electrical panel (that label says not to do that)

What is the code violation section(s):

You Saw WHAT At Your Inspection?

Contractor says 'Everyone else lets me do that ... why won't you?'



Photo 05

Issue: Excessive duct length

What is the code violation section(s):

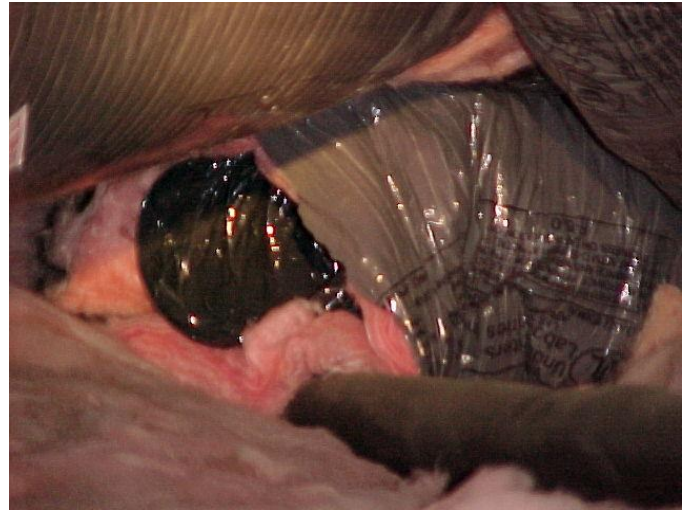


Photo 06

Issue: Duct left open, not connected (air blowing out)

What is the code violation section(s):

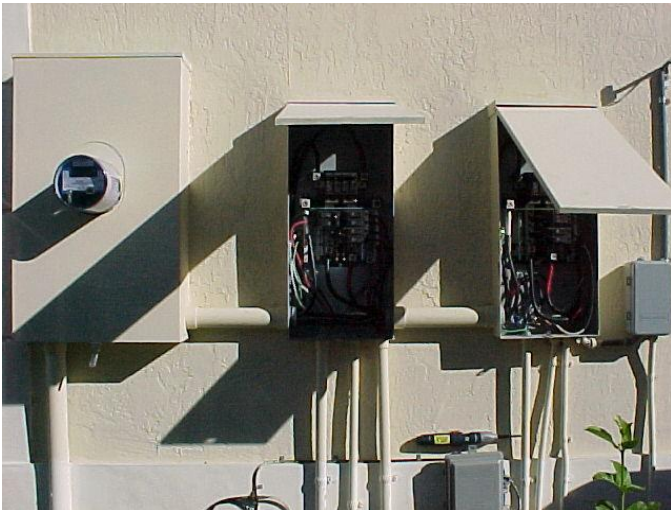


Photo 07

Issue: Service entrance conductors for the right side service equipment run through the left side service equipment (center enclosure)

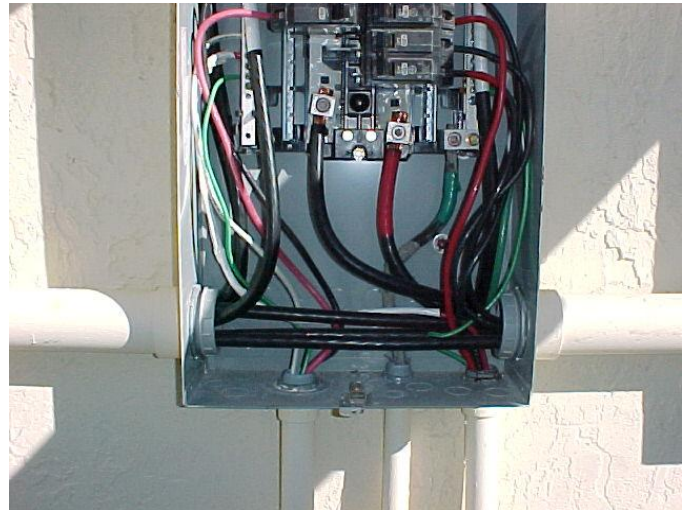


Photo 08

Issue: closer view of center panel shown in Photo 7, service entrance conductors run through service equipment enclosure to another service equipment

What is the code violation section(s):

(Code violation section(s) answers can be found at the bottom of last page)

[Click here](#) for current and previous editions of the Inspectors' Field Comments Newsletter©.

You Saw WHAT At Your Inspection?

Contractor says 'Everyone else lets me do that ... why won't you?'

Please, if you have photos of any items or issues you would like to share with other building officials / inspectors / plan reviewers, send photos of the items or issues to jerry@jerrypeck.com for inclusion in future newsletters photo editions.

All contributors will be acknowledged and given credit for their contributions ... or will be anonymous if so requested ... PLEASE help others by sharing photos of items or issues you have found in the field.

I look forward to all contributions, and suggestions for future topics.

Respectfully submitted,



Jerry Peck
 Editor/Publisher
 Inspectors' Field Comments Newsletter©
jerry@jerrypeck.com

Please use the email address above if:

- You have comments, corrections, or additional information to share – **all comments are encouraged.**
- **You would like to contribute a photo to be included in the newsletter photos edition.**
- **You have a topic you would like researched for the regular newsletter edition.**
- You know someone you think would like to receive this newsletter, please include their name and email address.
- You would no longer like to receive this newsletter; just put "No thank you" in the subject line.

Photo 01 – Code Violation section(s) for improper CSST bonding
 2014 FBC-FG 310.1.1, 404.1 & 404.2
 2014 FBC-R G2411.1.1, G2415.1 & 2415.2

Photo 02 – Code Violation section(s) for missing anchors/fasteners
 2014 FBC-B 2404.1 & 2404.2
 2014 FBC-R R301.2.1 & R308.6

Photo 03 – Code Violation section(s) for working space blocked
 2011 NEC 110.26

Photo 04 – Code Violation section(s) for surge suppressor in panel
 2011 NEC 110.3(B)

Photo 05 – Code Violation section(s) for excessive duct length
 2014 FBC-M 304.1 & 603.6
 2014 FBC-R M1601.4
 2014 FBC-EC C303.2, C403.2.7.2 & R303.2, R403.2.2

Photo 06 – Code Violation section(s) for duct not connected
 2014 FBC-M 304.1 & 603.6
 2014 FBC-R M1601.4
 2014 FBC-EC C303.2, C403.2.7.2 & R303.2, R403.2.2

Photos 07 and 08 – Code Violation section(s) for service entrance conductors using one enclosure as a raceway to run through to another service equipment enclosure, the pass-through service entrance conductors are in a raceway with conductors other than service entrance conductors
 2011 NEC 230.7

Please send any corrections/additional code sections for the stated issue to jerry@jerrypeck.com – I will send that information out as an update/correction.

Please send photos of items/issues you find/see and would like to share with others.